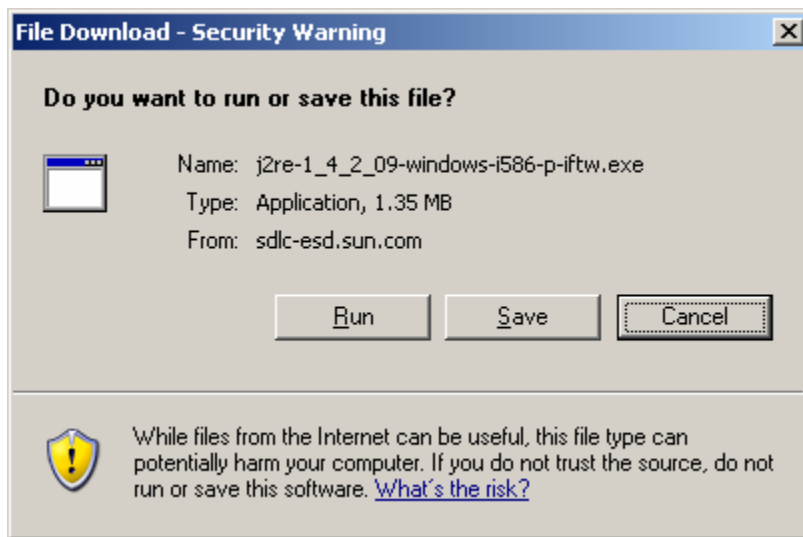


Using the Chat Interface in eLearning

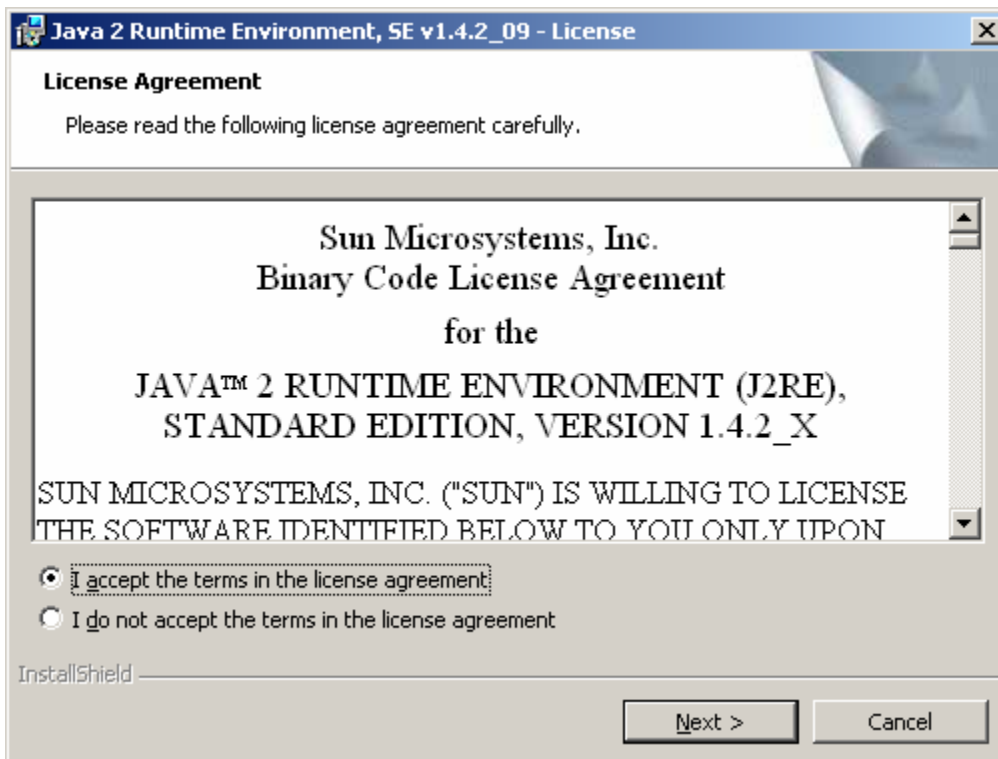
1. In order to use the chat functionality, you have to have the Java Runtime Environment (JRE) version 1.4.2 or higher installed. There is a link that you can use on the left side of the screen to access a download page.
2. When you click the link, a Web page opens. Scroll down the page until you see a heading labeled **J2SE v 1.4.2_09 JRE**. Click the link labeled **Download J2SE JRE**.
3. Scroll down the resulting page and click **Accept** for the license agreement.
4. Find the heading that matches the operating system you are using (most likely **Windows Platform - Java(TM) 2 Runtime Environment, Standard Edition 1.4.2_09**) and click the link labeled **Windows Installation, Multi-language**.
5. When prompted to run or save, click the **run** button, and allow the installation to proceed.



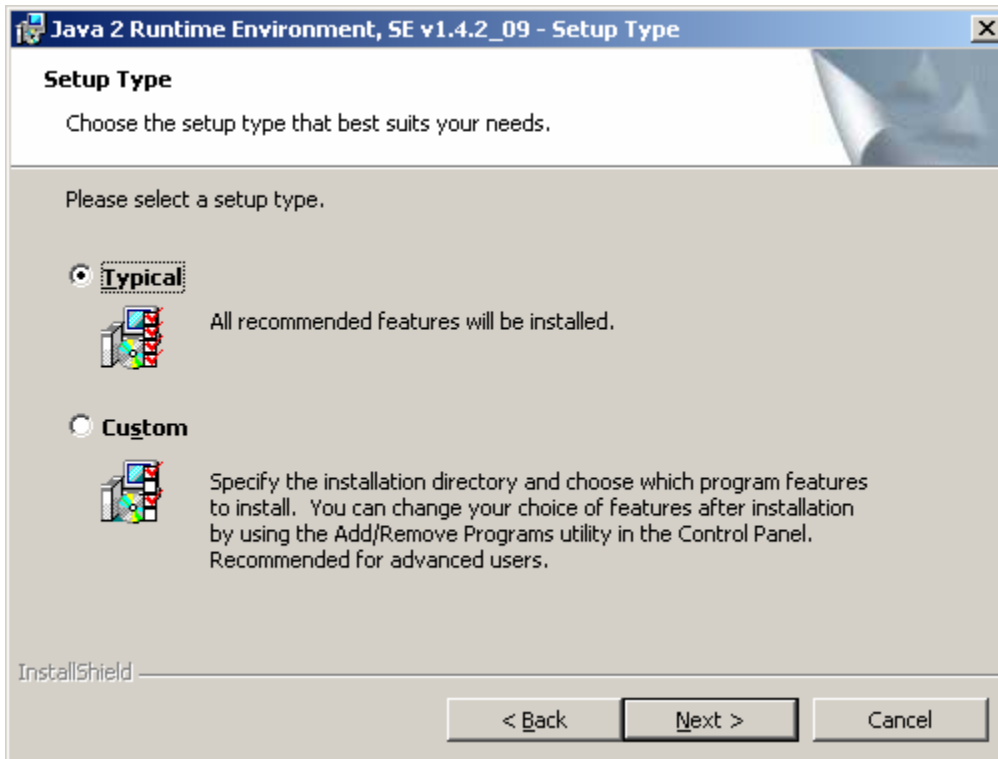
6. When prompted to run or not run, click the **run** button. Allow the installation to proceed.



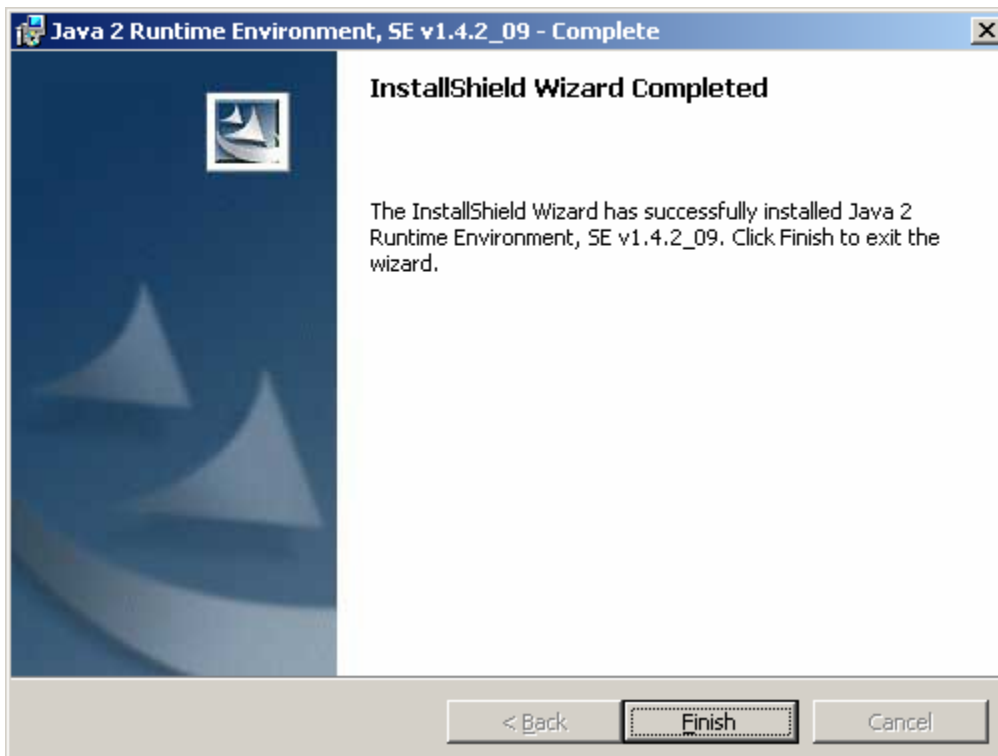
7. When prompted, accept the license agreement, and click the **Next** button.



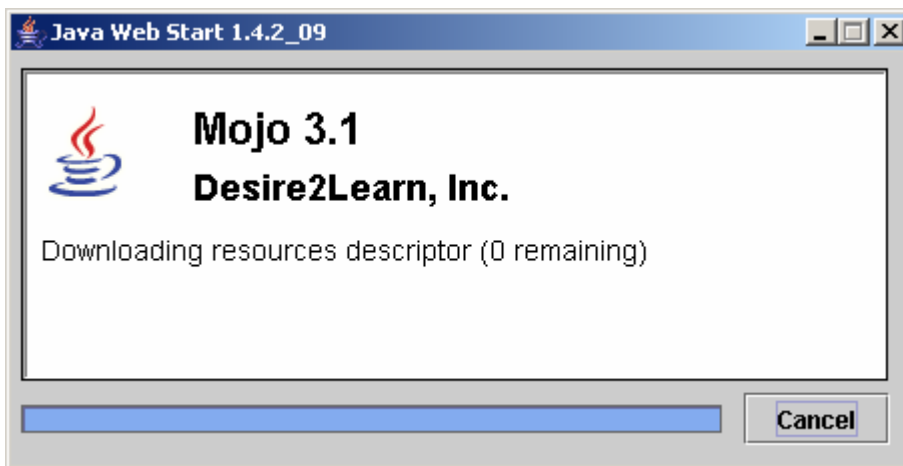
- When prompted, select the **Typical** setup, and click the **Next** button. Allow the installation to proceed.



- When prompted, click the **Finish** button.

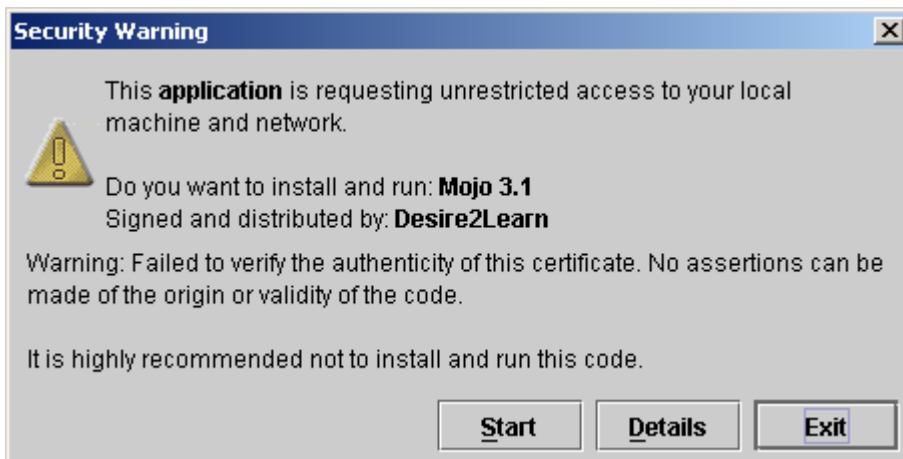


10. Go to the **Chat List** in eLearning.
11. Click the name of the chat session you want to access.
12. A series of boxes may appear and disappear from the screen.

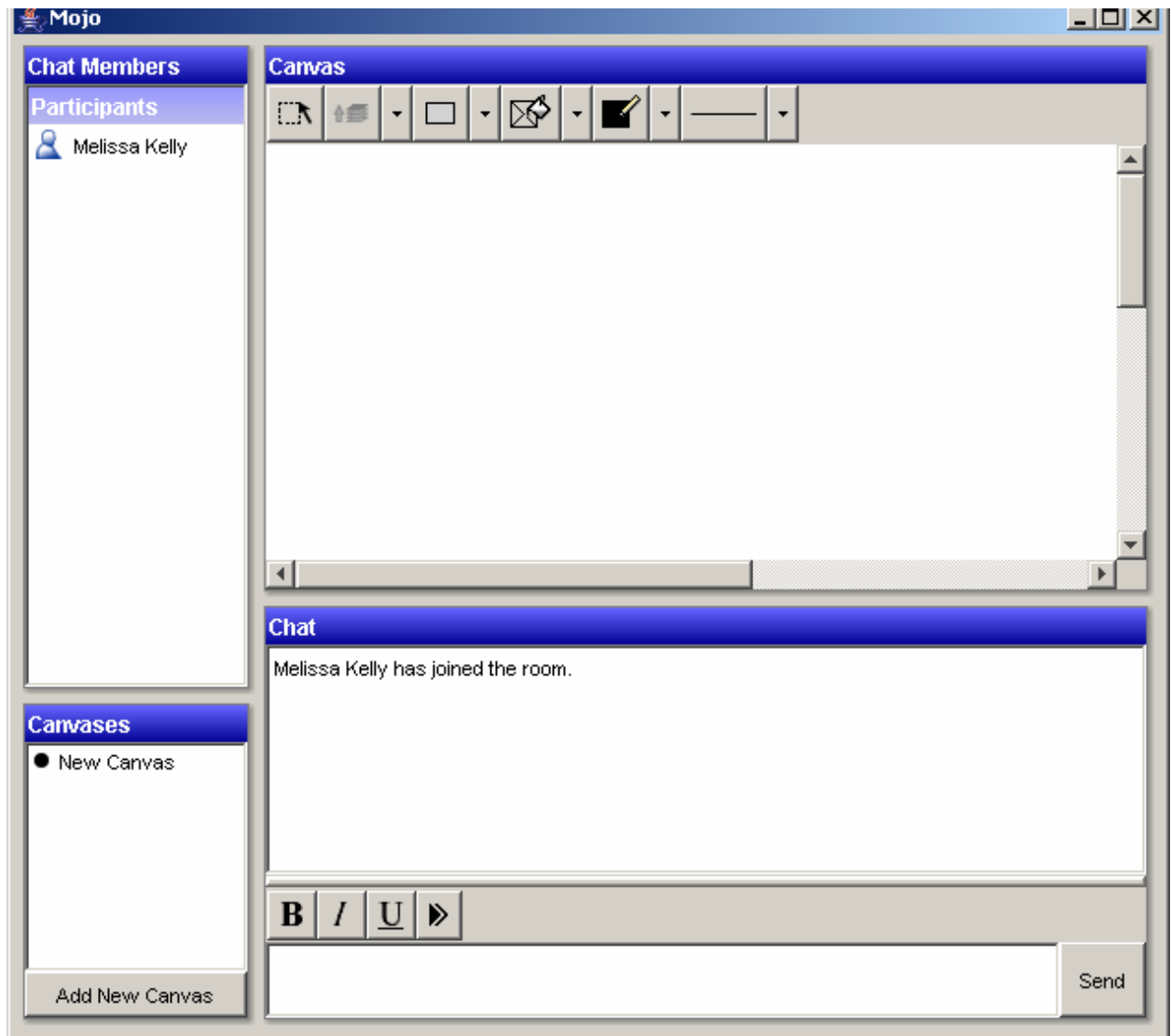


You may also see a box that indicates files being copied or downloaded.

13. When prompted, click the **Start** button to save the Mojo 3.1 file.



14. Once the installation finishes, the chat window should open.



15. To communicate with the other participants, enter your message in the box at the bottom of the chat window and click the **Send** button.