

Setup Instructions for ArgoAir Wireless Network Windows XP with Service Packs 2 and 3

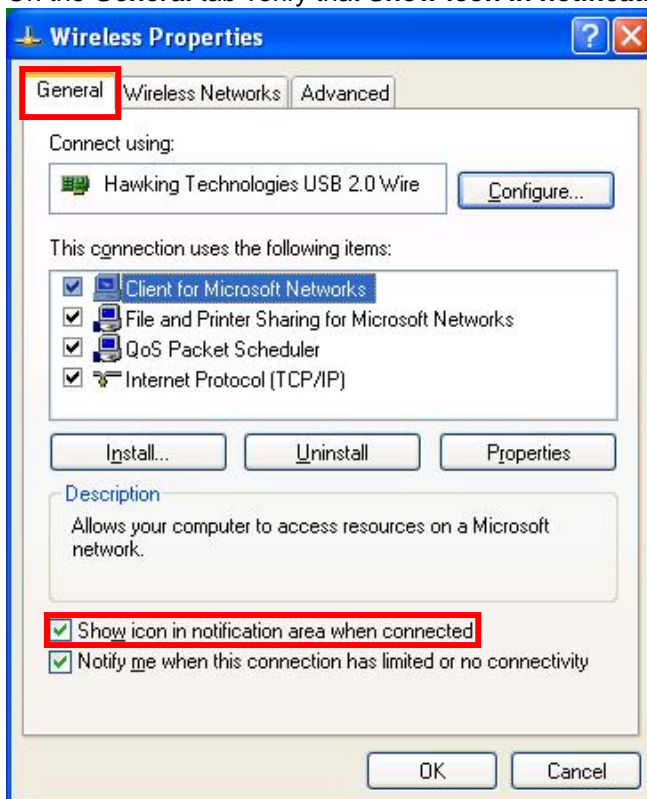


University Guests: A username and password are required to use ArgoAir. Your UWF host can obtain a guest ArgoAir account from the ITS Help Desk or a Local Service Provider.

1. From the **Start** menu, select **Settings** then **Control Panel**, double click **Network Options**, then right click on **Wireless** and select **Properties**.
(NOTE: If using Category view, select **Network and Internet Connections**, then **Network Connections**.)

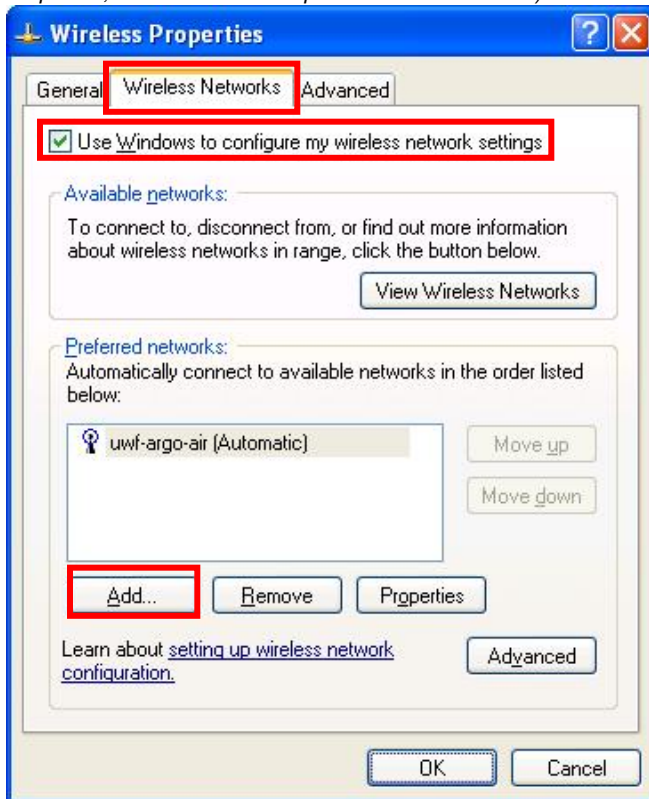


2. On the **General** tab verify that **Show icon in notification area when connected** is checked.



3. Select the **Wireless Networks** tab.
 - Verify that **Use Windows to configure my wireless network settings** is checked.
 - In the Preferred networks section, click **Add...**

*(Note: If a **Wireless Networks** tab does not appear, it is possible that the setup software for your wireless card is not enabled. To enable, go to the **Start** menu, open the **Control Panel**, open **Administrative Tools**, and then open **Services**. Click on **Wireless Zero Configuration**, and then click **Start or Restart the service**. Close all open windows for the Control Panel and Wireless Properties, and start over at step 1 of these instructions.)*

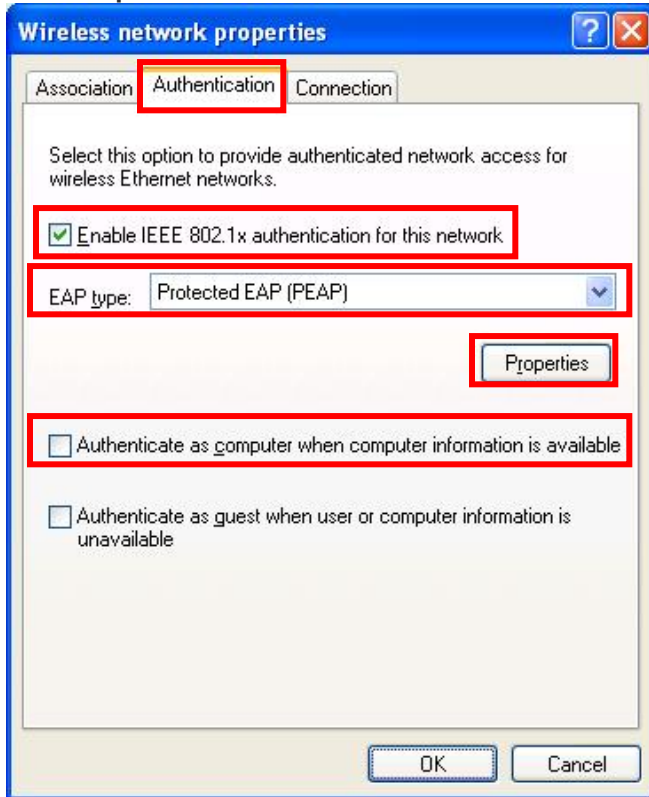


4. On the **Association tab**, enter the following:
- Network name (SSID): **uwf-argo-air**
 - Network Authentication: **WPA2**
 - Data Encryption: **AES**
 - Make sure the screen matches the one shown here.

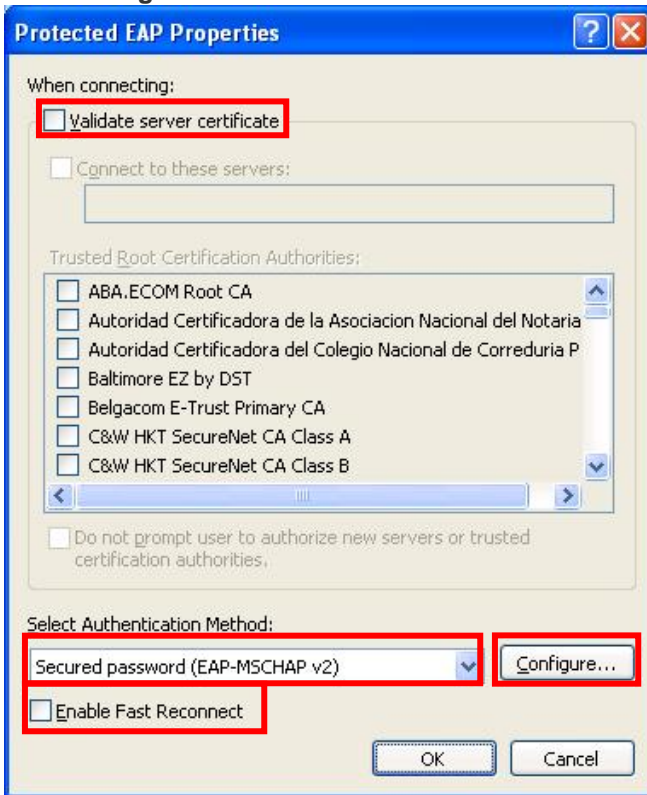
The image shows a screenshot of the Windows Network Connection Properties dialog box, specifically the Association tab. The dialog box has three tabs: Association, Authentication, and Connection. The Association tab is selected and highlighted with a red box. The Network name (SSID) field contains the text "uwf-argo-air" and is also highlighted with a red box. Below this, there is a checkbox labeled "Connect even if this network is not broadcasting" which is unchecked. The "Wireless network key" section is expanded, showing a message: "This network requires a key for the following:". Below this message, there are two dropdown menus: "Network Authentication" set to "WPA2" and "Data encryption" set to "AES", both highlighted with red boxes. Below these are two empty text boxes for "Network key" and "Confirm network key". There is also a "Key index (advanced)" dropdown menu set to "1". At the bottom of the key section, there is a checked checkbox labeled "The key is provided for me automatically". At the very bottom of the dialog box, there are "OK" and "Cancel" buttons.

5. Select the **Authentication** tab, then,
 - Verify that **Enable IEEE 802.1x authentication for this network** is checked.
 - Change the **EAP type** to **Protected EAP (PEAP)**.
 - REMOVE the checkmark from **Authenticate as computer when computer information is available**
 - Make sure the screen matches the one shown here.

Click **Properties**.



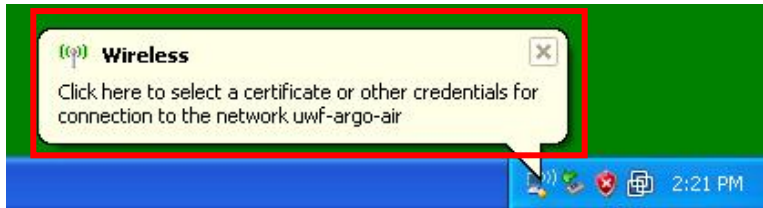
6. Verify the following:
- Verify that **Validate server certificate** is NOT checked.
 - Verify that **Authentication Method** is set to **Secured password (EAP-MSCHAP v2)**.
 - Verify that **Enable Fast Reconnect** is NOT checked.
- Click **Configure....**



7. Remove the checkmark from **Automatically use my Windows logon name and password (and domain if any)**, then click **OK** in each of the open windows back to the *Network Connections* window.



8. When in the range of the wireless network, Windows will attempt to connect. When Windows XP attempts to connect for the first time, a balloon pop-up will appear in the taskbar.
Click the balloon.



9. Enter the following:
- In the **User name** field, enter your ArgoNet username.
 - In the **Password** field, enter your ArgoNet password.
 - Leave the **Logon domain** field blank.
- Click **OK**. Windows will log into the ArgoAir network.



10. Once successfully logged in, the **Wireless** network in the **Network Connections** window should say **Authentication succeeded**.

After you connect for the first time, Windows remembers your credentials and will automatically log into the network without asking you to reenter your username and password. Windows will only ask for your username and password again if you change your password.

11. In order to print to a WEPA kiosk from your computer, download WEPA print drivers from wepanow.com. Your WEPA username and password was sent to you in an email from WEPA. This WEPA account is linked to your Nautilus Card account. For more information on WEPA printing, see uwf.edu/studentprinting.



If you have questions, please contact the ITS Help Desk at (850) 474-2075 or helpdesk@uwf.edu