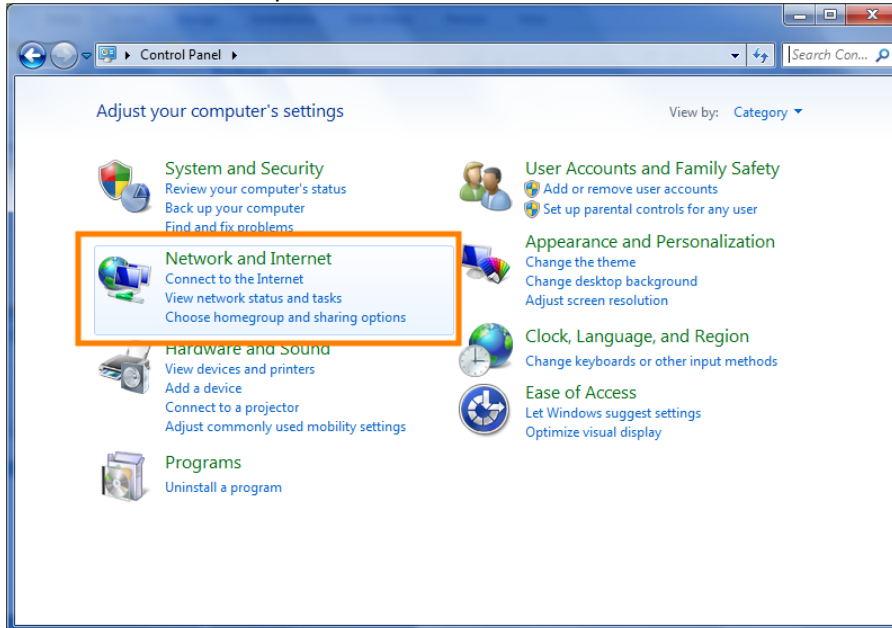


# Setup Instructions for ArgoAir Wireless Network Windows 7

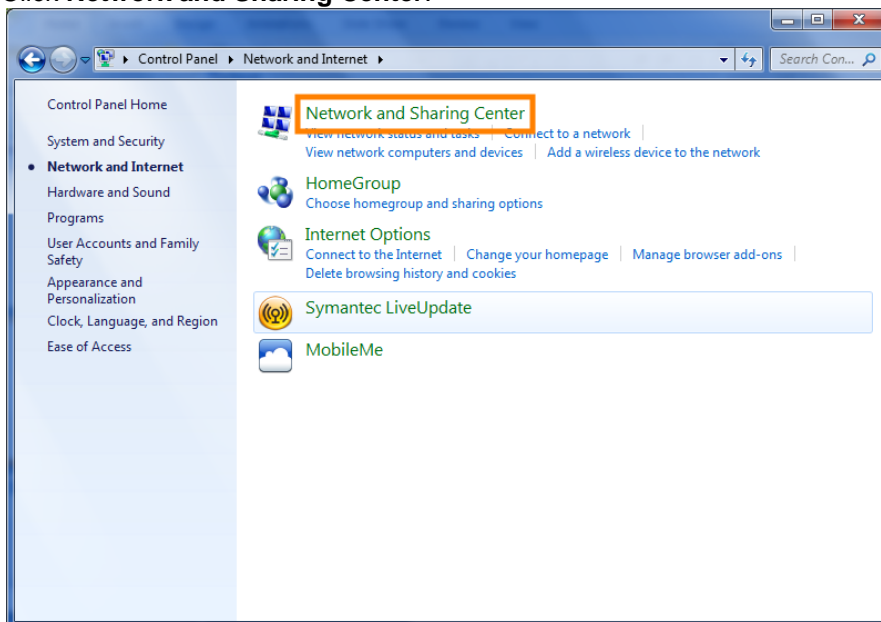


University Guests: A username and password are required to use ArgoAir. Your UWF host can obtain a guest ArgoAir account from the ITS Help Desk or a Local Service Provider.

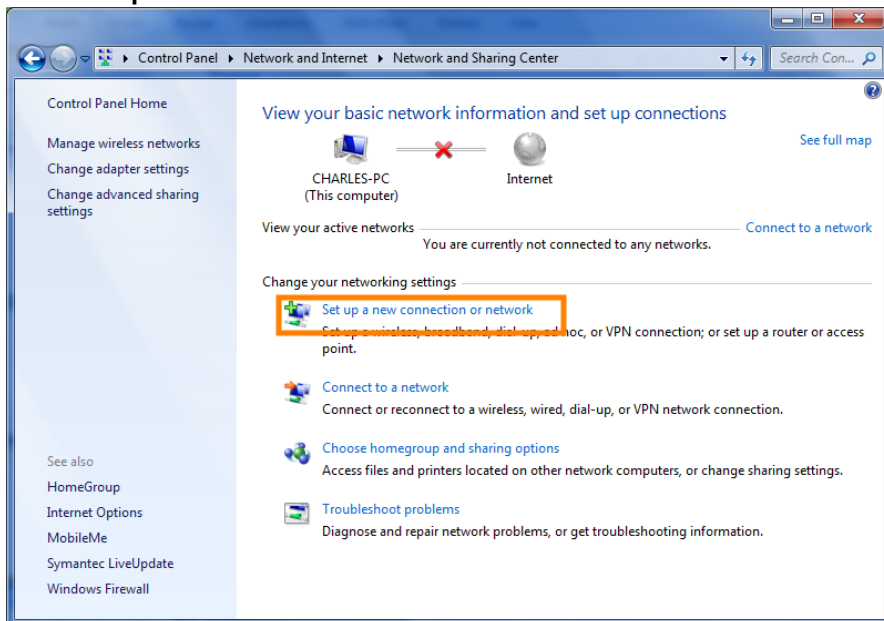
1. From the Start menu, open the **Control Panel**, and then click **Network and Internet**.



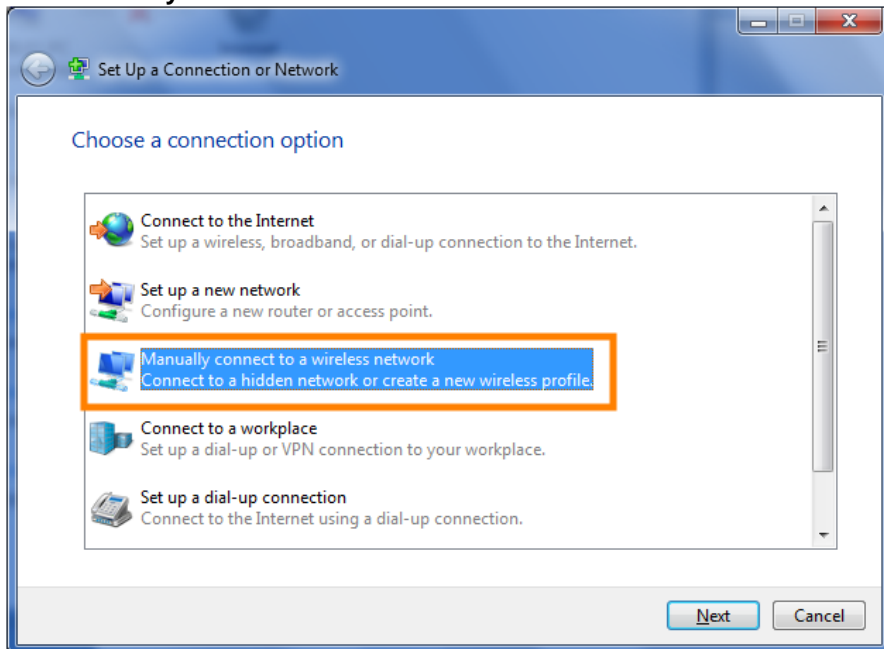
2. Click **Network and Sharing Center**.



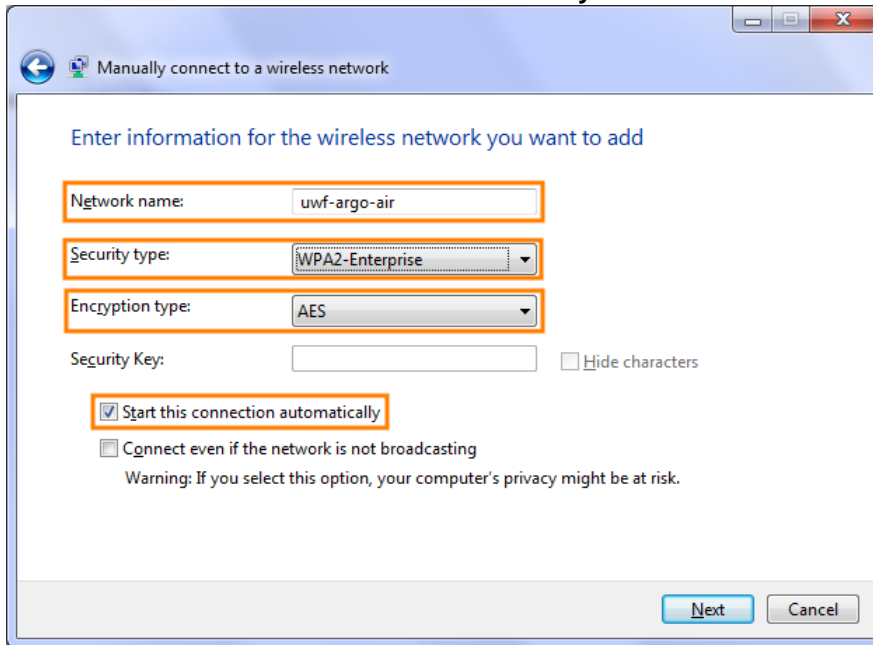
3. Click **Set up a new connection or network.**



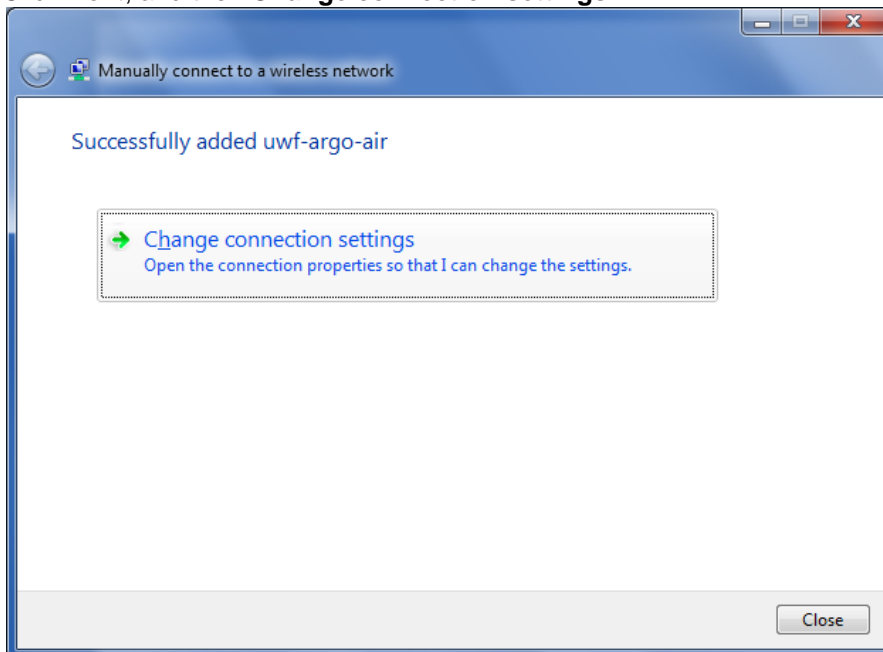
4. Click **Manually connect to a wireless network.**



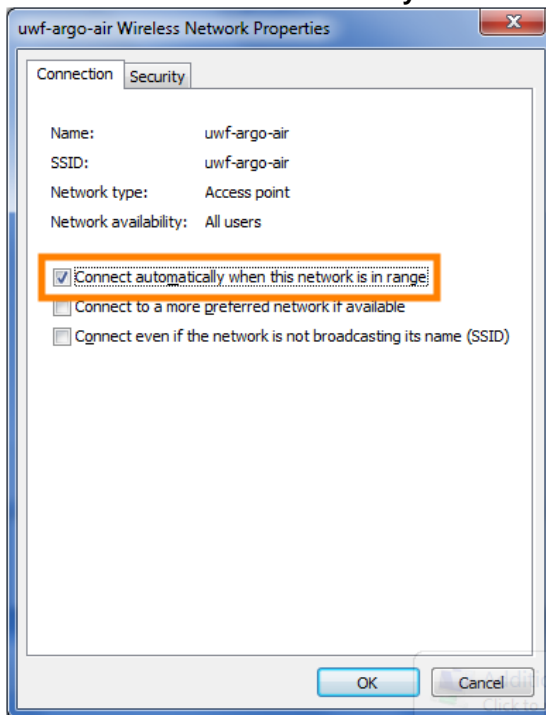
5. Enter the following information:
  - Network name: **uwf-argo-air**
  - Security type: **WPA2-Enterprise**
  - Encryption type: **AES**
  - Make sure **Start this connection automatically** is checked.



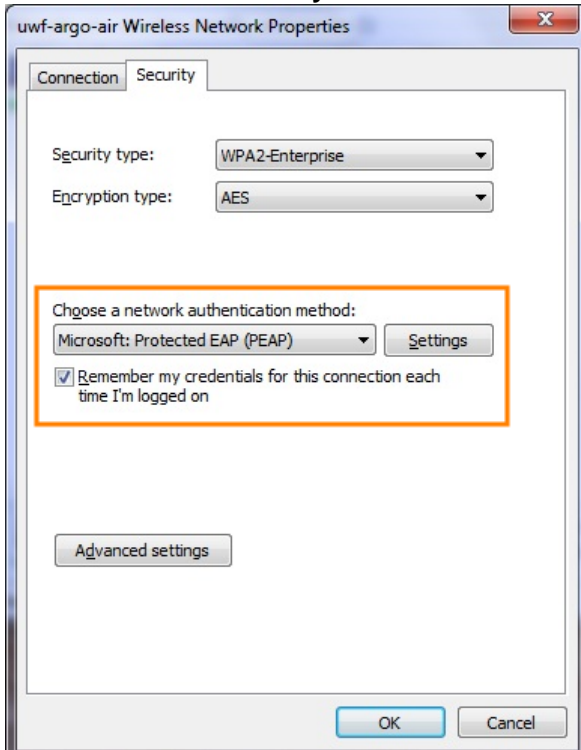
6. Click **Next**, and then **Change connection settings**.



7. Make sure **Connect automatically when this network is in range** is checked.



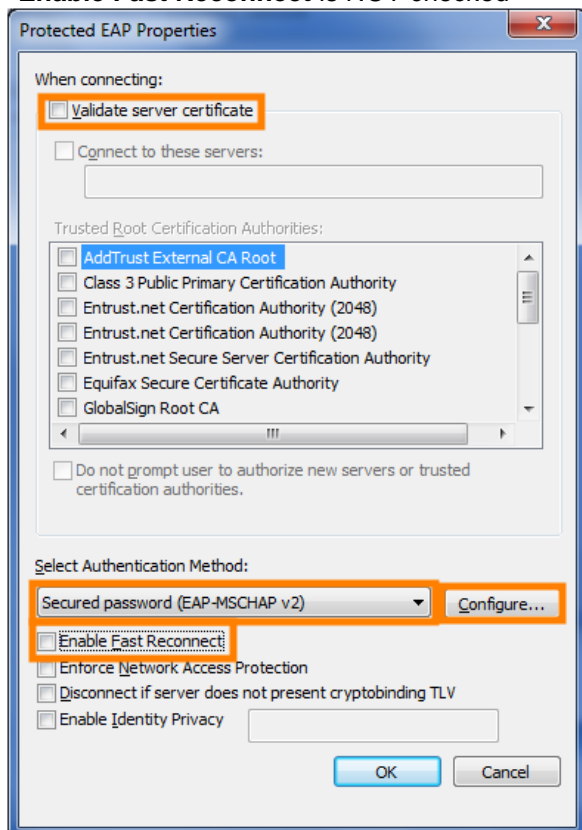
8. Click the **Security** tab. Then, under **Choose a network authentication method**, select **Microsoft: Protected EAP (PEAP)**.
9. Checkmark **Remember my credentials for this connection each time I'm logged on**.



10. Click **Settings**.

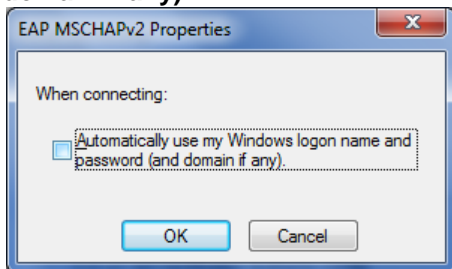
11. Verify the following settings:

- **Validate server certificate** is NOT checked
- Authentication Method: **Secured password (EAP-MSCHAP v2)**
- **Enable Fast Reconnect** is NOT checked



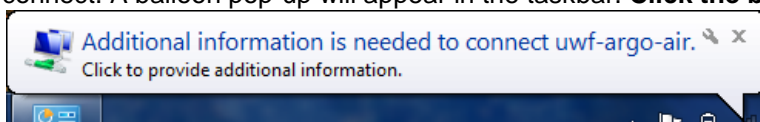
12. Click **Configure**.

13. REMOVE the checkmark from **Automatically use my Windows logon name and password (and domain if any)**.

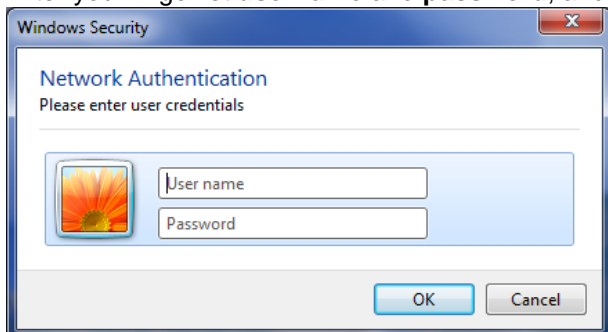


14. Click **OK** in each of the open windows.

15. **Connecting for the First Time.** When in the range of the wireless network, Windows will attempt to connect. A balloon pop-up will appear in the taskbar. **Click the balloon.**



16. Enter your ArgoNet **username** and **password**, and then click **OK**.



17. In order to print to a WEPA kiosk from your computer, download WEPA print drivers from [wepanow.com](http://wepanow.com). Your WEPA username and password was sent to you in an email from WEPA. This WEPA account is linked to your Nautilus Card account. For more information on WEPA printing, see [uwf.edu/studentprinting](http://uwf.edu/studentprinting).



If you have questions, please contact the ITS Help Desk at (850) 474-2075 or [helpdesk@uwf.edu](mailto:helpdesk@uwf.edu).