

RESNET

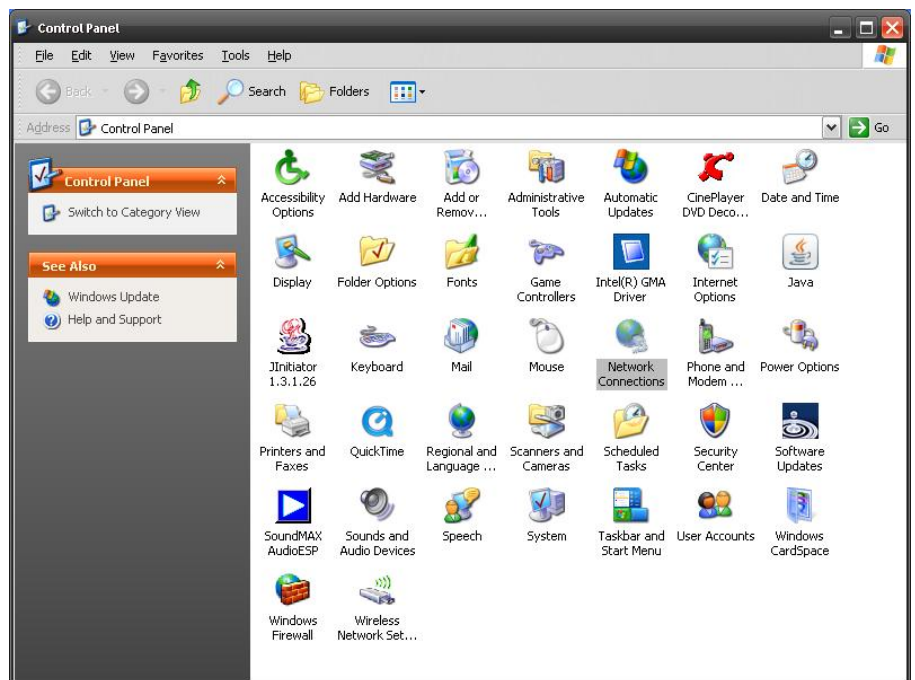
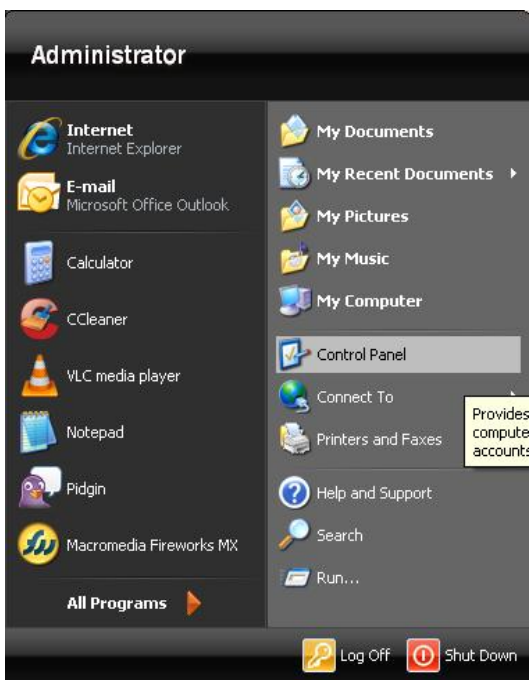
Office of Housing and Residence Life

Windows[®] xp

How to Get Connected

1. Click on Start and Control Panel

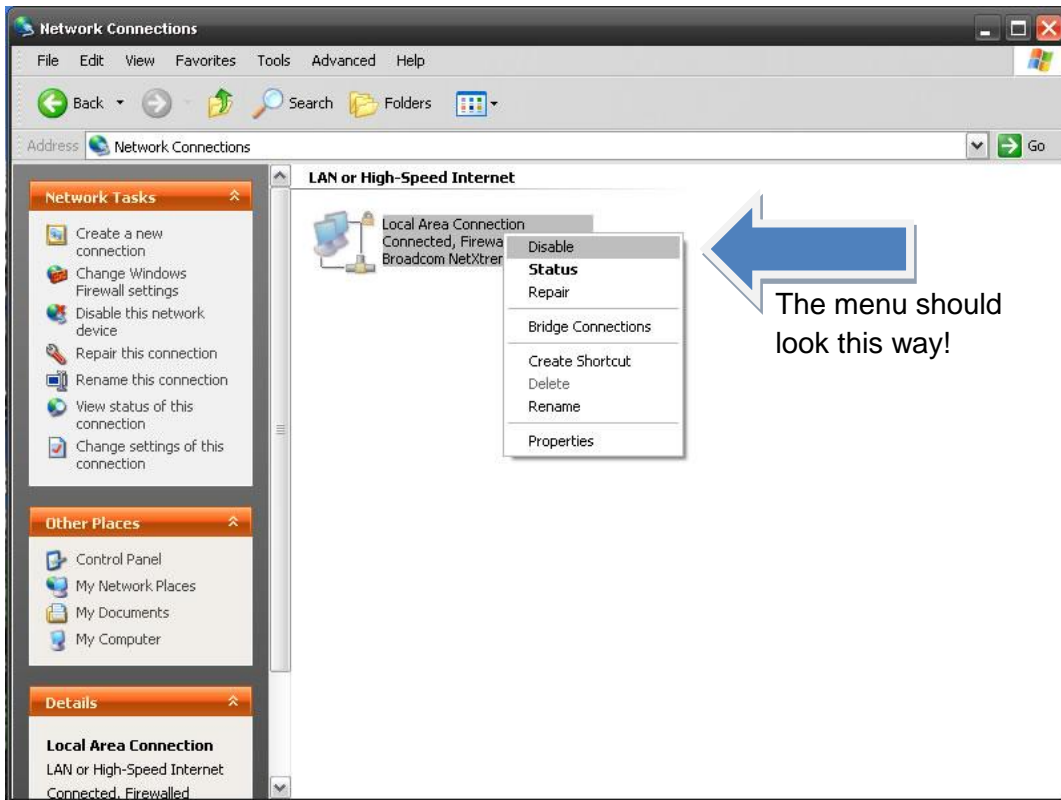
2. Click on Network Connections



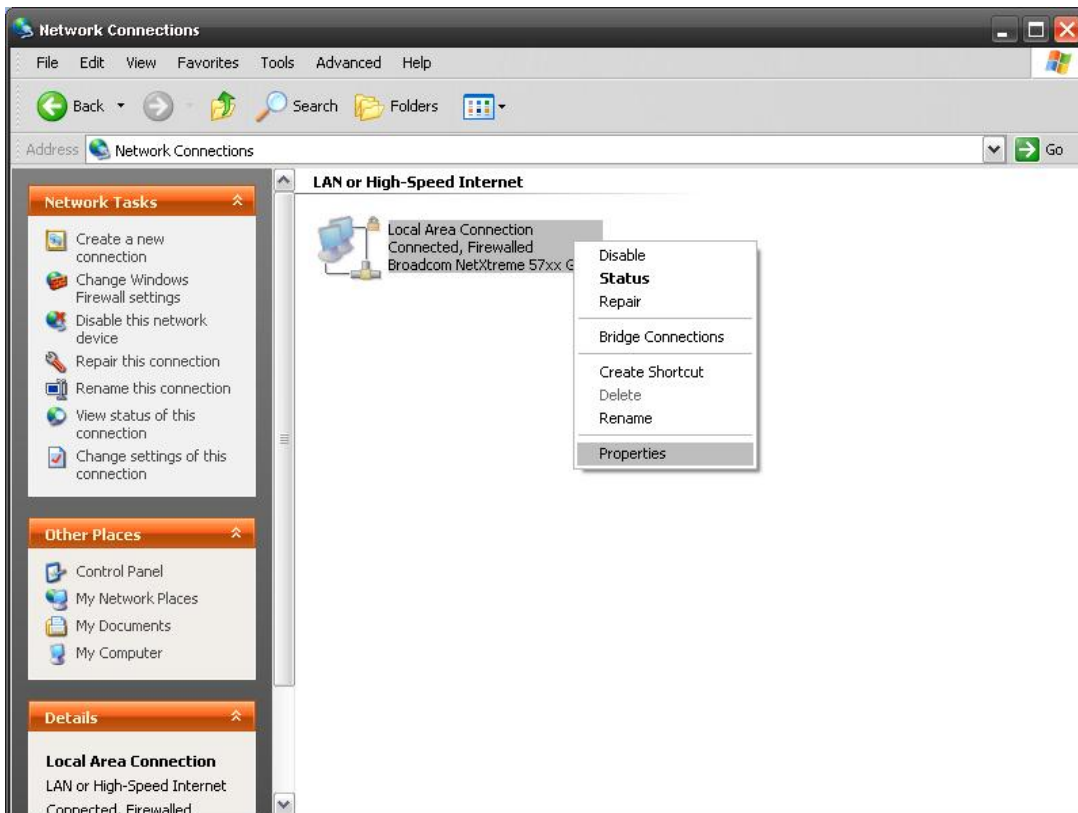
*Note: The recommended Ethernet cable is any Category 5e Patch Cable. These can be purchased at most major retailers and at the UWF bookstore in the University Commons.

A length of 5 ft. should be sufficient for most uses.

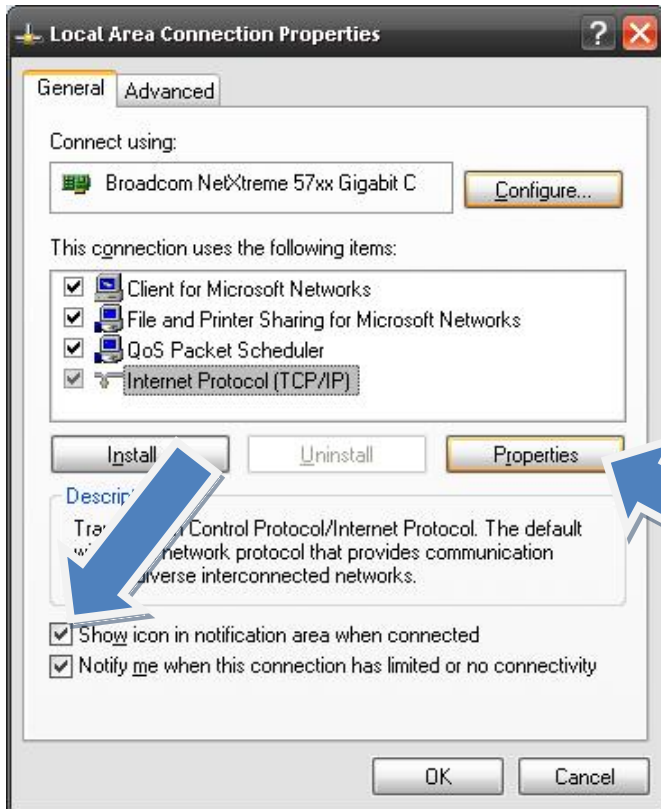
3. In this window you should see an adapter that is called Local Area Connection (by default). Make sure that this adapter is enabled by right clicking on the LAC and clicking **Enable**. If **Disable** is the only option you see then the LAC is **Enabled**.



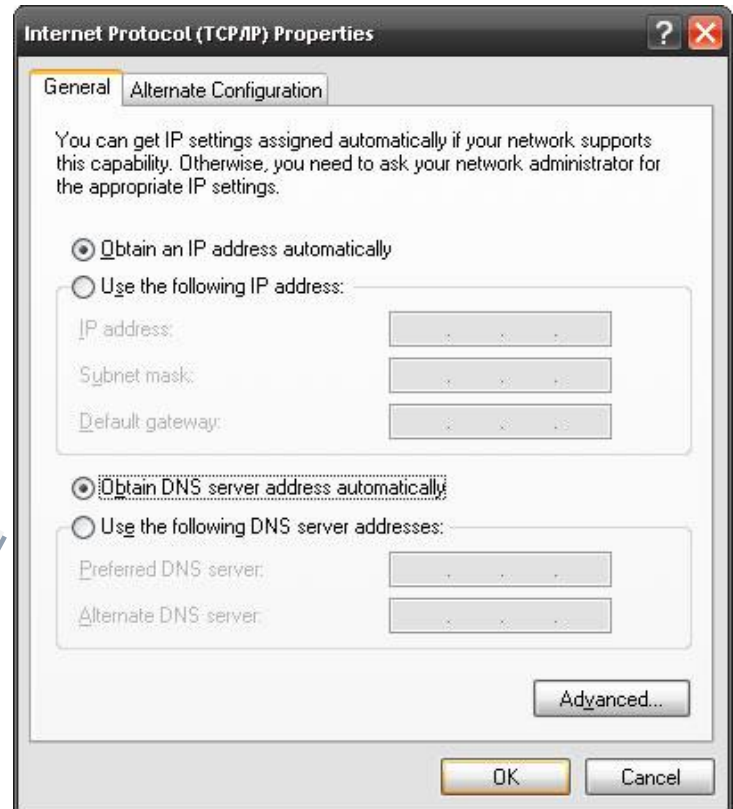
4. Right click the LAC again and go down to **Properties**.



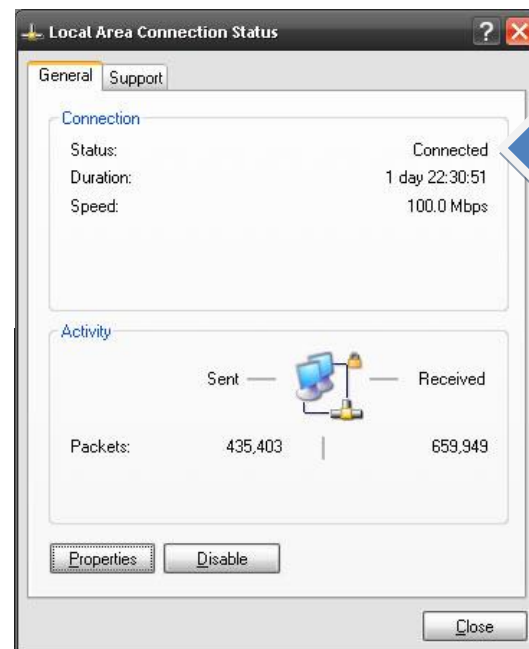
5. Make sure the box left of the Internet Protocol (TCP/IP) is checked. Also, check the top box on the bottom, Show... (left blue arrow). Then click on Internet Protocol (TCP/IP) and click Properties.



6. Ensure that Obtain IP address and DNS are set to automatic.



7. Click "OK" on all windows until you get back to the original Control Panel windows and "X" out of them. You should now have the two computer icon on your taskbar that looks like the one below. Double click that icon and it will bring up the menu to the left. You should now be connected to the Internet!



Make sure that it says "Connected" at 100.0 Mbps.

8. If you are still having issues please contact the ITS HelpDesk at:

(850) 474-2075 or uwf.edu/helpdesk