

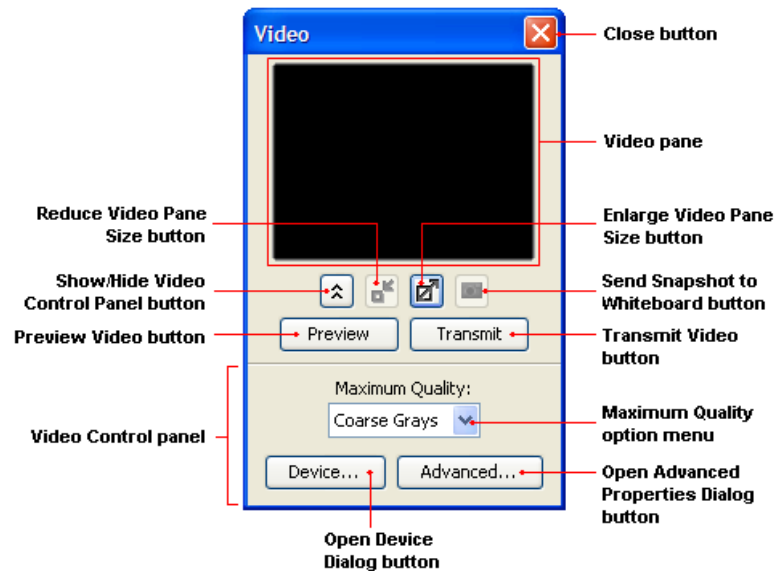


Using Live Video

Quick Reference Guide


The Video feature of Elluminate *Live!* enables you to transmit video broadcasts to others in a session. This is video you send live via a video camera (e.g., web cam) – not to be confused with a pre-recorded video (movie) that you can play using the Multimedia feature.

The Video window has the following components:


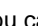


Steps for Using Live Video

1. Click on the  Enable Video button in the Toolbar.

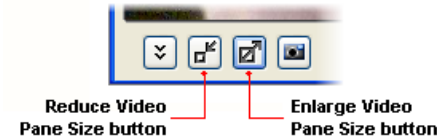
2. Click on the  Show Video Window button in the Toolbar. To open the Video window.
3. Click on the **Preview** button to start your camera and display in your Video pane the images the camera is capturing. No one but you will see this video transmission.
4. Select the Image Quality you want to transmit. The options are Coarse Grays, Coarse Color, Medium Grays, Medium Color, Fine Grays and Fine Color.
5. Click on the **Transmit** button to send the video to others in the session.

Expanding

The Video window can be expanded to reveal the Video Control panel. To do so, click on the  Show Video Control Panel button. When you are done setting the controls, you can hide the panel by clicking on the  Hide Video Control Panel button.


Resizing

The Video pane can be set to three different sizes: small (160 x 120 pixels), medium (320 x 240 pixels) and large (640 x 480 pixels).



Stopping Video Transmission

To stop transmitting video:

1. But keep the Video window open; release the Transmit button by clicking on it. No images will be transmitted.
2. And close the video window; Click the  Hide Video Window button in the toolbar.