




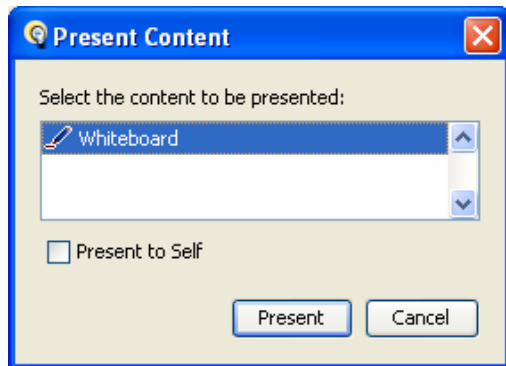
Presentation Mode

Quick Reference Guide for Moderators


As a Moderator, you can change the view of the Whiteboard or an Application Sharing window so it fills the entire Elluminate *Live!* window. This is called Presentation Mode. When you use Presentation Mode, everyone in the session automatically will have the same full-window view – until either they “opt out” or you end Presentation Mode and return the content to a normal view.

Displaying Whiteboard Content in Presentation Mode

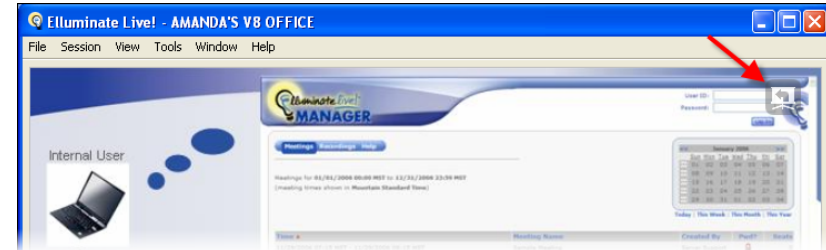
1. Open the Present Content dialog box by clicking the  Present Content button.
2. Select Whiteboard. If you wish your own view of the Whiteboard to be in Presentation Mode, select **Present to Self**.



3. Click on the Present button.

4. To stop Presentation Mode, click the  terminate button.

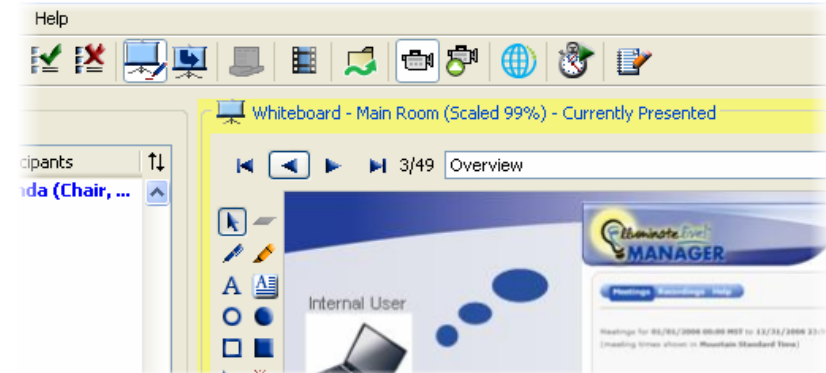
Participant View



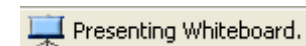
Participants can exit Presentation Mode at anytime by clicking the “Return to non-presented layout.” The Participant can return to Presentation Mode by click the return button.



Moderator View



If the Moderator does not select **Present to Self** and has their windows locked, the Whiteboard window will be surrounded by a yellow border containing text to indicate that it has been placed in Presentation Mode. There will also be an indicator in the bottom right-hand side of the Moderator’s screen to confirm the Whiteboard is being show to Participants in Presentation Mode.



The Moderator can switch to the presentation view at anytime by clicking the



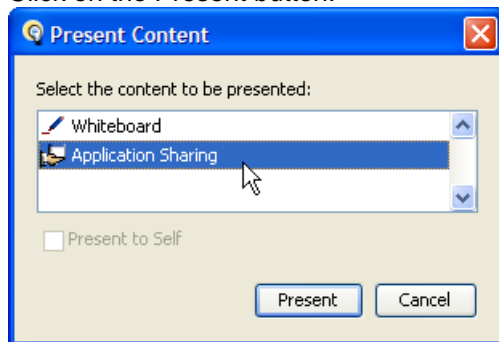
button.

Displaying Application Sharing in Presentation Mode

You can put your Application Sharing window into Presentation Mode either through the Present Content dialog box or through the Host Applications dialog box. Application Sharing will appear in the Present Content dialog box only if an Application Sharing session has already been started.

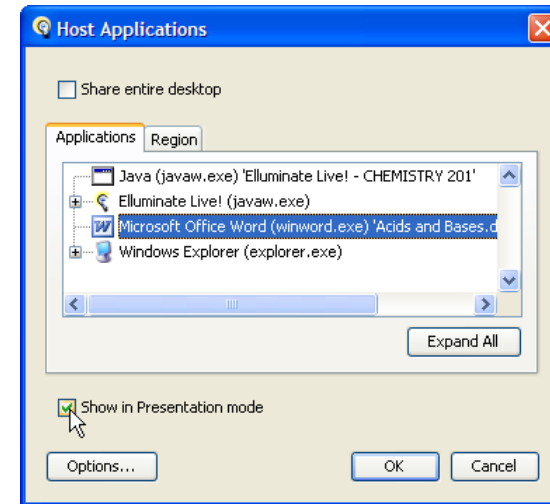
Using the Present Content Dialog

1. Share your application through the Application Sharing dialog box.
2. Open the Present Content dialog box.
3. Select Application Sharing.
4. Click on the Present button.



Using the Application Sharing Dialog

1. Open the Application Sharing dialog box.
2. Select the application or region you wish to share.
3. Select the **Show in Presentation mode** option.



4. Click on the OK button.
5. To stop Presentation Mode but to continue Application Sharing click

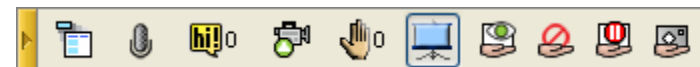


the button. To stop Application Sharing click the



Mini-Controller

Participants can be moved in and out of Presentation Mode from the Mini-Controller by click the Presentation Mode button.



Tips

- To chat, use audio or raise your hand when in Presentation Mode, use the assigned hot key or exit Presentation Mode.
- You cannot use the Graphing Calculator, Multimedia, Quiz, Web Tour and File Transfer during Presentation Mode.